



LTD1508 SFP Optical Transceiver Gigabit Ethernet, 1550 nm, 1250 Mb/s, 70 km

Product Description

The LTD1508 SFP Gigabit-Ethernet LC duplex transceiver is intended for 70 km reach service in 1250 Mb/s 1550 nm single mode high-speed LAN and SAN data communications equipment where low-cost, extraordinary performance and reliability are essential. It meets the requirements of IEEE802.3z 1000 BASE-LH, consumes low power, operates from a 3.3 volt DC power supply and is offered in the 0 to 70°C commercial temperature range. The industry standard 2x10 small form pluggable (SFP) package is fabricated with a rugged die cast metal housing and cage assembly. The low jitter and low bit error rate optical assembly features a 1550 nm DFB laser transmitter and PIN/TIA receiver. It incorporates the SFP MSA LVTTTL Loss of Signal (Rx_LOS), Tx Fault (Tx_FAULT) and Tx Disable (Tx_DIS) monitor and control functions and the SFF-8472 Rev 9.3 compliant digital diagnostic monitor feature which is accessed via the I²C 2-wire serial ID interface. The differential AC coupled Tx and Rx data interfaces (50 ohms to ground, 100 ohms line to line) are LVPECL compatible. The device is Class I laser safety compliant.



Applications

- 1250 Mb/s Gigabit Ethernet data links
- Channel extenders
- Bus extenders
- High speed I/O file servers
- Data storage networks
- LAN
- SAN
- RSAN
- Host adapters
- Switch-to-switch interfaces
- Mass storage system interconnects
- Hub interconnects
- Router interconnects
- Distributed multi processing
- Telecom switches

Features

- LC Duplex optical interface
- 70 km reach
- 1250 Mb/s data rate
- +3.3 V power supply
- Low DC power consumption
- 2x10 SFP MSA compliant package
- Bail or pull latch option
- Hot swappable
- High performance 1550 nm DFB laser
- High sensitivity PIN/TIA optical receiver:
- Single Mode operation
- BER < 1X10⁻¹² (2⁷ - 1 NRZ PRBS test pattern)
- IEEE 802.3z 1000 BASE-LH compliant
- Operating temperature range:
 - Commercial: 0 to 70°C
- Monitor and Control Functions
 - Loss of Signal (Rx_LOS), LVTTTL
- Tx Disable (Tx_DIS), LVTTTL
- Tx Fault (Tx_FAULT), LVTTTL
- 2-wire I²C data bus
- SFF-8472 Rev 9.3 MSA compliant
- Internally AC coupled and terminated
- LVPECL Rx and Tx data interface
 - 100 Ohms differential (line to line)
 - 50 Ohms single ended (line to ground)



Absolute Maximum Ratings (EXCEEDING THESE RATINGS MAY CAUSE IRREVERSIBLE DAMAGE TO THE DEVICE)

Parameter	Symbol	Minimum	Maximum	Units

Optical and Electrical Signal Absolute Maximum Ratings

Logic State Absolute Maximum Ratings

Recommended Operating Conditions

Parameter	Symbol	Min	Typ	Max	Units	Notes

Ordering Information

Part Number	Latch Option (X)	Temperature Option (Y)



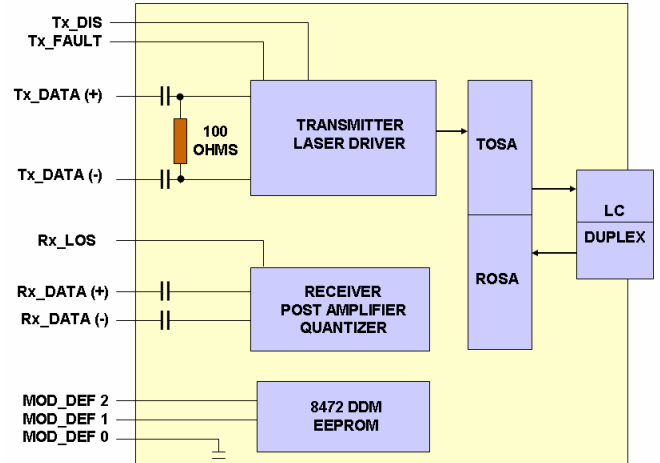
Transceiver Block Diagram

Transmitter Section

The transmitter section consists of a high reliability 1550 nm DFB laser diode (LD) with back facet monitor photo detector (PD) in an eye safe optical sub-assembly (TOSA), which is mated to the Tx port of the fiber optic LC duplex receptacle. A driver IC converts LVPECL differential input data signals into an analog current source that drives the LD. The transmitter is provided with the Tx_Disable and Tx_FAULT control and monitoring functions. SFF-8472 Rev 9.3 MSA digital diagnostics are enabled via the 2-wire I²C data bus.

Receiver Section

The receiver section consists of a high-speed PIN / TIA photodiode and transimpedance preamplifier mounted in an optical subassembly (ROSA), which is mated to the Rx port of the fiber optic LC duplex receptacle. The output of the PD drives the post-amplification, quantizing, and optical signal detection circuits. The receiver is equipped with the Rx_LOS (Loss of Signal) monitoring function.



Transceiver Monitor and Control Functions

Rx Signal Loss (Rx_LOS) Description

The Rx_LOS (Loss of Signal) is an open collector LVTTTL monitor port. It switches state based on the received optical input signal level that passes through the photo detector (PD), post amplifier and quantizer. If the received signal is above the Rx threshold, then Rx_LOS is set LOW indicating normal operation. If the received signal is below the Rx threshold, then Rx_LOS is set HIGH indicating a possible broken fiber, unplugged connector or low Tx signal from the host. The Rx_LOS pin requires an external 4.7K to 10 K Ohm pull-up resistor.

Tx Disable (Tx_DIS) Description

The Tx_DIS (Transmit Disable) is an open collector LVTTTL control port that is controlled by a logic signal on the host (system) printed circuit board. If the system is ready to send data then the Tx_DIS line is set LOW to enable the laser driver and the laser transmitter. If the system is not ready to send data, then the Tx_DIS line is set HIGH to disable the transmitter.

Tx Fault (Tx_FAULT) Description

The Tx_FAULT (Transmit Fault) is an open collector LVTTTL monitor port. It switches states based on the condition of the laser driver and the laser including the end of life condition of the laser. If the parameters of the laser driver and laser are within specifications then the Tx_FAULT is set LOW indicating normal transceiver operation. If a fault occurs, including excess optical output power then Tx_FAULT is set HIGH which disables the transmitter. The Tx_FAULT can be reset to normal operation by toggling Tx_DIS or switching the power supply. The Tx_FAULT pin requires an external 4.7K to 10K Ohm pull-up resistor.



SFP MSA and SFF 8472 Rev 9.3 Digital Diagnostics

This device incorporates digital diagnostic monitoring and control functions that are compliant with the SFF-8472 Rev 9.3 Specifications that provides backward compatibility with the digital diagnostic interface defined by the SFP-MSA. The data entry point A0 (hex) is the entry point for the legacy information including Serial ID and Vendor specific information such as the part number, date code, vendor identification, product serial number, type of transceiver and the transceiver parameters. The data entry point A2 (hex) is the entry point for the advanced diagnostic feature sets outlined in the SFF-8472 Rev 9.3 specification. The device is internally calibrated at the time of manufacture and the parameter sets corresponding to the Alarm and Warning functions are programmed into memory. The SFF-8472 Rev 9.3 digital diagnostic interface enables the system host to discover the transceiver's parametric and data functions via a 2-wire system with one wire providing the clock and timing information and the other wire providing two-way communications with the transceiver. Additional information can be found in the SFF-8472 Rev 9.3 documentation.

A0 (hex) Table - Summary of Parameters in the A0 (hex) Parametric Table

SFP Optical transceiver with LC Duplex connector

Type of transceiver by application

Encoding - 8B10B

The maximum reach of this transceiver over a specified length of fiber type

Vendor Name - Ligent Photonics

Vendor OUI - None

Vendor Part Number - the Ligent Photonics part number on this data sheet

Vendor Revision - the Ligent revision number

Laser Operating Wavelength - the wavelength specified on this data sheet

Options Supported by this Transceiver (LVTTTL digital interface)

Tx_DISABLE

Tx_FAULT

Rx_LOS

Bit Rate MIN and MAX Limits - the limits determined by the Bit Rate tolerances specified on this data sheet

Vendor Serial Number - the Ligent serial number in ASCII format

Diagnostic Monitoring Type - Internally Calibrated

Enhanced Monitoring Features for Software Control are Enabled in this device

Alarm and Warning Flags are enabled

Software support for monitoring and control of Tx_DISABLE is enabled

Software support for monitoring and control of Tx_FAULT is enabled

Software support for monitoring and control of Rx_LOS is enabled

Software support for monitoring and control of RATE_SELECT is not supported on this device



A2 (hex) 8472 Digital Diagnostic Table - Summary of Parameters in the A2 (hex) Parametric Table

The data in the parameter tables are compared with the data in the measured data tables in order to create a warning or alarm status bit

Parameters stored in memory are the reference data for this device. There are two tables for each parameter (Warning and Alarm):

Case Temperature	High and Low Values for Alarm and Warning
Operating Voltage	High and Low Values for Alarm and Warning
Laser Bias Current	High and Low Values for Alarm and Warning
Tx Optical Output Power	High and Low Values for Alarm and Warning
Rx Optical Input Power	High and Low Values for Alarm and Warning

The following parameters return the value of zero because this device is internally calibrated

Rx_PWR(4), Rx_PWR(3), Rx_PWR(2), Rx_PWR(1), Rx_PWR(0)
Tx_I(SLOPE), Tx_I(OFFSET), Tx_PWR(SLOPE), Tx_PWR(OFFSET)
T(SLOPE), T(OFFSET)
V(SLOPE, V(OFFSET))

Measured A/D values are stored in two bytes corresponding to the MSB and LSB data

Case Temperature	Signed integer, LSB equal to 1/256C
Operating Voltage	Unsigned integer, LSB equal to 100 μ Volt
Laser Bias Current	Unsigned integer, LSB equal to 2 μ A
Tx Optical Output Power	Unsigned integer, LSB equal to 0.1 μ W
Rx Optical Input Power	Unsigned integer, LSB equal to 0.1 μ W

Software status bits for software control of this device

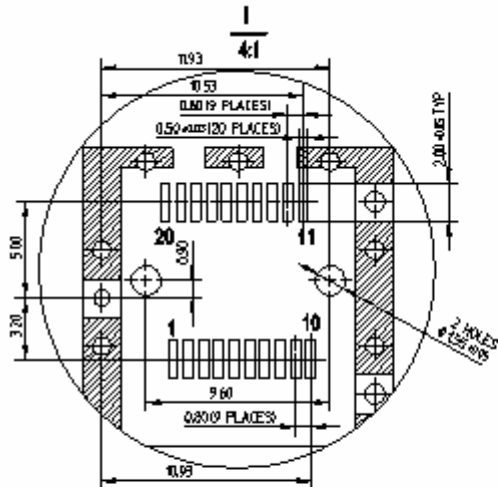
Tx_DISABLE	Set or cleared status bit indicates the state of the Tx_DISABLE control function
Tx_DISABLE	Read/Write bit for software control of Tx_DISABLE
Rx_RATE_SELECT	Not used on this device
Tx_FAULT	Set or cleared status bit indicates the state of the Tx_FAULT monitor function
Rx_LOS	Set or cleared status bit indicates the state of the Rx_LOS control function
Data_Ready_Bar	Bit is set at power up and remains set to indicate data is ready to be read
Data_Ready_Bar	Bits is set low when reading data from the transceiver

The Warning or Alarm bit is set when the parameter drops below or exceeds the Low or High values stored in memory. The parametric values are such the Warning bit is set before the Alarm bit:

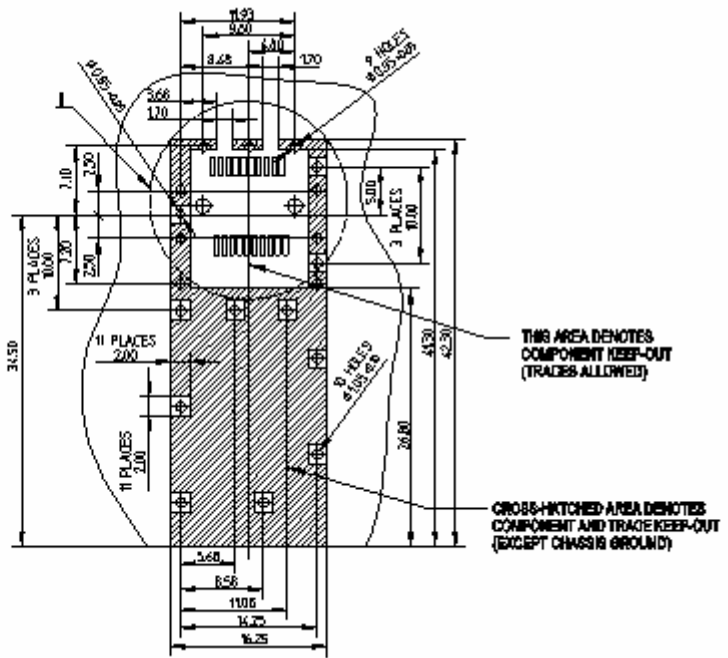
Case Temperature
Operating Voltage
Laser Bias Current
Tx Optical Output Power
Rx Optical Input Power



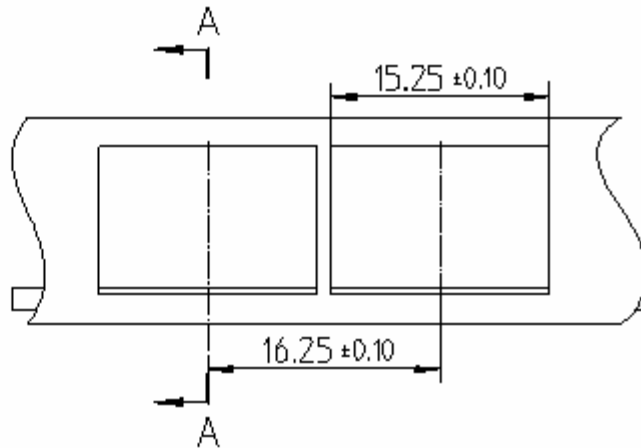
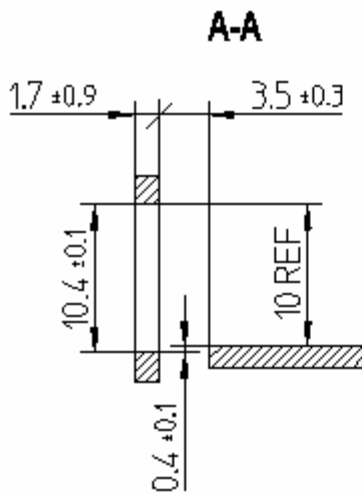
Recommended PCB Layout



- Notes:**
1. Datum and basic dimensions established by customer
 2. Pads and vias are chassis ground, 11 places
 3. Thru holes, plating optional



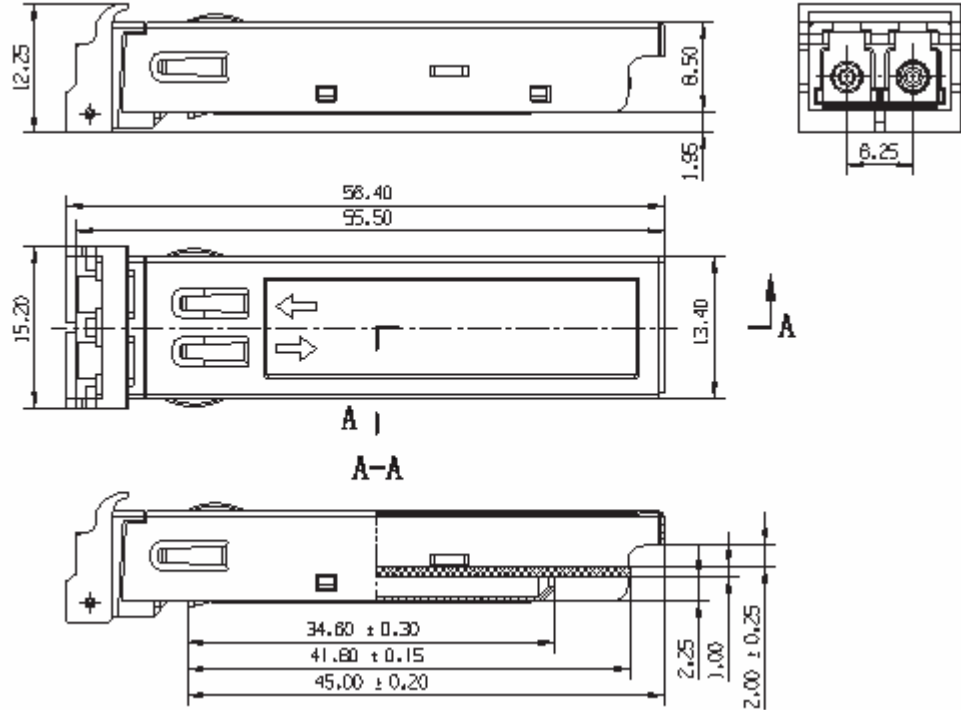
Recommended Front Panel Layout Opening for LC



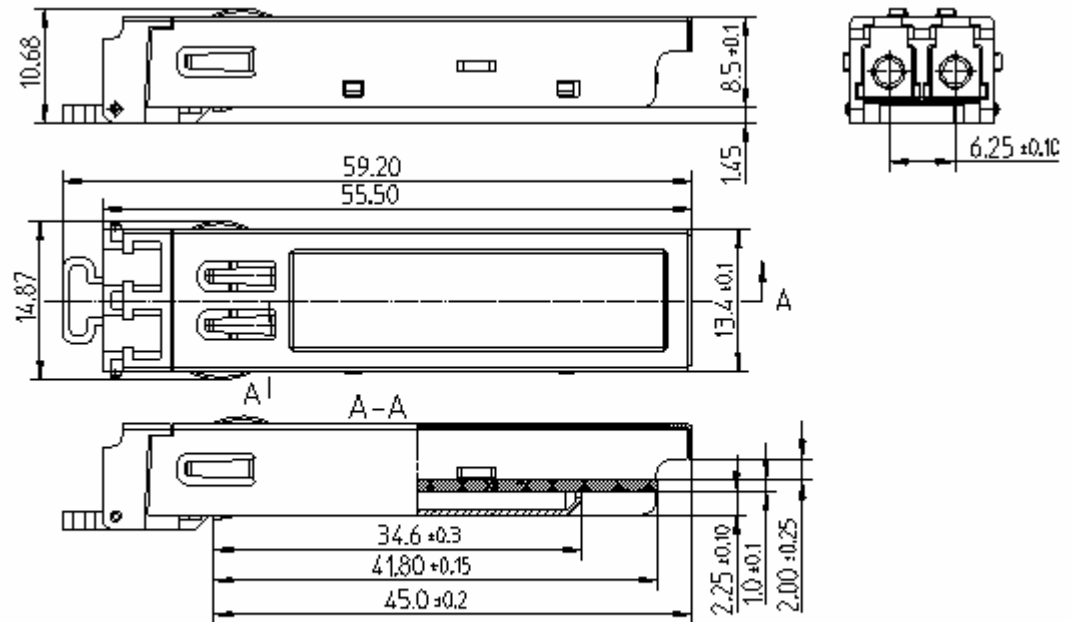


Mechanical Dimensions

Bail Latch



Pull Latch



Dimensions are in millimeters

Dimension tolerance is ± 0.1mm unless otherwise specified

Regulatory Information

Eye Safety

The transceiver is a Class 1 eye-safe device according to FDA 21CFR1040.10 and IEC 60825-2.

Electromagnetic Interference (EMI), Immunity and Product Safety

The transceiver is ESD safe (electrical pins) when tested according to MIL-STD-883, Method 3015.7 and ESD safe (optical connector) when tested according to IEC 61000-4-2. The device is immune to strong RF fields when tested in accordance with IEC 61000-4-3. The device complies with (US) FCC, Part 15, Subpart J; (Europe) CENELEC EN 55022; (Canada) Class B (CISPR22A); and (Japan) VCCI Class 1. The device has been designed to conform to product safety requirements including UL1950, CSA 22.2, and IEC 60950-1, and has been designed to meet the flammability requirements of UL94.

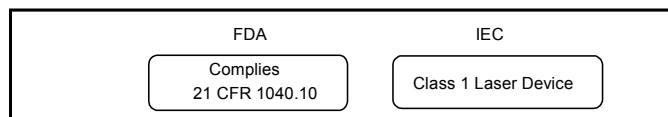
Notice

The factory has made all adjustments to this device prior to shipment. No adjustments or modifications to the device are required or permitted. Any adjustment, modification or tampering of the device voids the product warranty. The US Food and Drug Administration may consider that any adjustment or modification to this device is an act of manufacturing and therefore will require that the device be recertified in accordance with 21 CFR 1040.10 Subpart j.

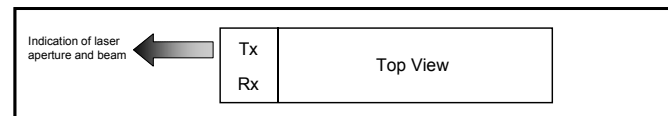
Laser Radiation Information

Wavelength	1550 nm
FDA Total Pout: 7 mm aperture at 20 cm distance	< 790 microwatts
IEC Total Pout : 7 mm aperture at 10 cm distance	< 10,000 microwatts
Beam Divergence	17.25°

Required Label



Laser Emission



Ligent Sales Offices - USA

Ligent Photonics, Inc.

2701 Dukane Drive
Suite 200
St. Charles, IL 60174
PH (630) 513-7226
FX (630) 513-9173
WS www.ligentphotonics.com

Ligent Photonics, Inc.

(Virginia Sales Office)
8210 Strathmore Lane
Roanoke, VA 24019
PH (540) 797-5793
FX (540) 366-5793
WS www.ligentphotonics.com

New Age Electronics

3000 Northwood's Parkway
Suite 280
Norcross, GA 30071
PH (770) 242-8800
FX (770) 242-8180
WS www.newagelec.com

New Age Electronics

8376 Six Forks Road
Suite 202
Raleigh, NC 27615
PH (919) 866-0620
FX (919) 866-0621
WS www.newagelec.com

New Age Electronics

4940 Corporate Drive
Suite B
Huntsville, AL 35805
PH (256) 430-8000
FX (256) 430-8414
WS www.newagelec.com

K-Tech Sales

100 Century Center Court
Suite 405
San Jose, CA 95112
PH (408) 437-1808
FX (408) 437-1883
WS www.ktechsales.com

Kruvand Associates

1202 Richardson Drive
Suite 113
Richardson, TX 75080
PH (972) 437-3355
FX (972) 680-8854
WS www.kruvand.com

Kruvand Associates

8100 Shoal Creek Boulevard
Suite 250
Austin, TX 75080
PH (512) 454-1111
FX (512) 454-9858
WS www.kruvand.com

Kruvand Associates

10601 Grant Road
Suite 104
Houston, TX 77070
PH (713) 956-6741
FX (713) 972-680-8854
WS www.kruvand.com

VAL Technical Sales

183 Prospect Street
Hingham, MA 02043
PH (781) (781) 749-8358
FX (781) 740-4663
WS www.valtechnical.com

Ligent Sales Offices - Asia

Hisense Optoelectronics Technology Co., Limited

No.11, Jiangxi Road
Qingdao, Shandong
China 266071
PH 86 (532) 601-0000
FX 86 (532) 601-6007
WS www.hisenseopto.com

Summit Hisense Company, Limited

Triton Square
Office Tower Z 19F 1-8-12
Harumi Chuo-ku 104-6219
Japan
PH 81-3-5547-1252
FX 81-3-5547-1268